



Morecambe Offshore Windfarm: Generation Assets Environmental Statement

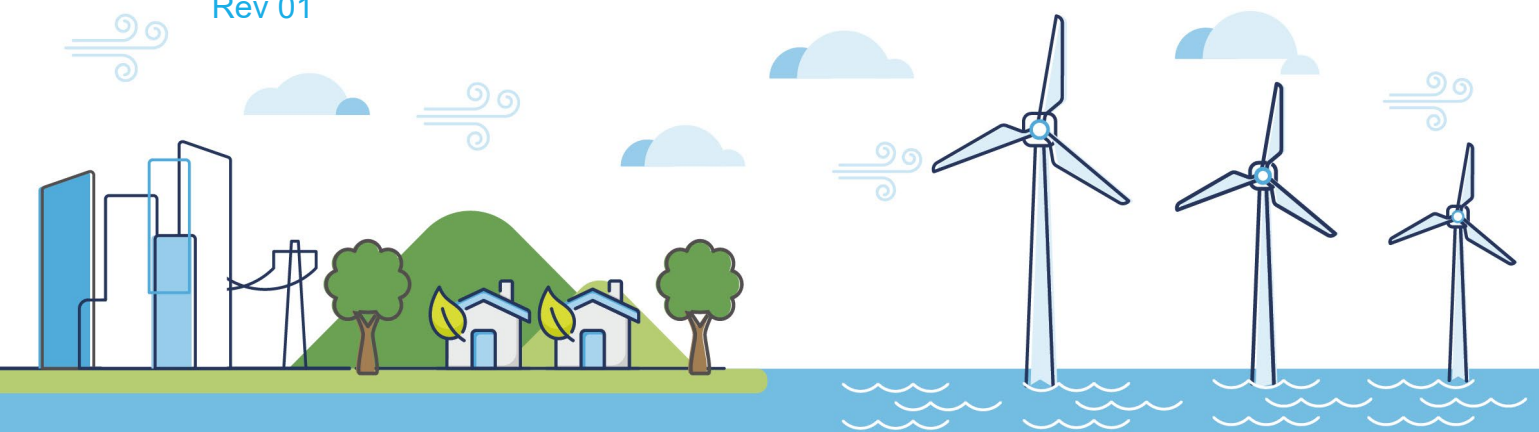
Volume 5

Chapter 18 SLVIA Figures (Part 15 of 34)

PINS Document Reference: 5.3.18.15

APFP Regulation: 5(2)(a)

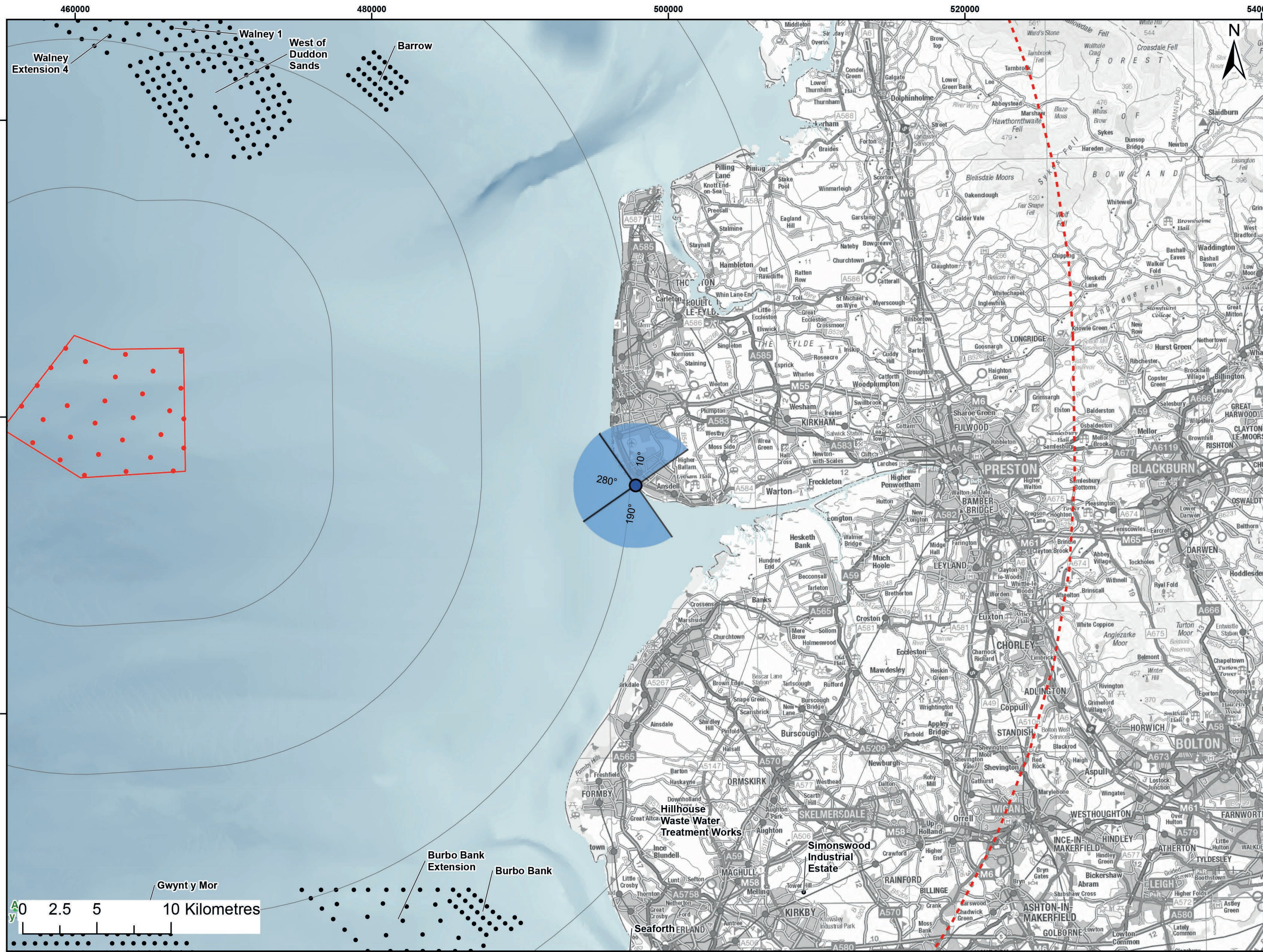
Rev 01



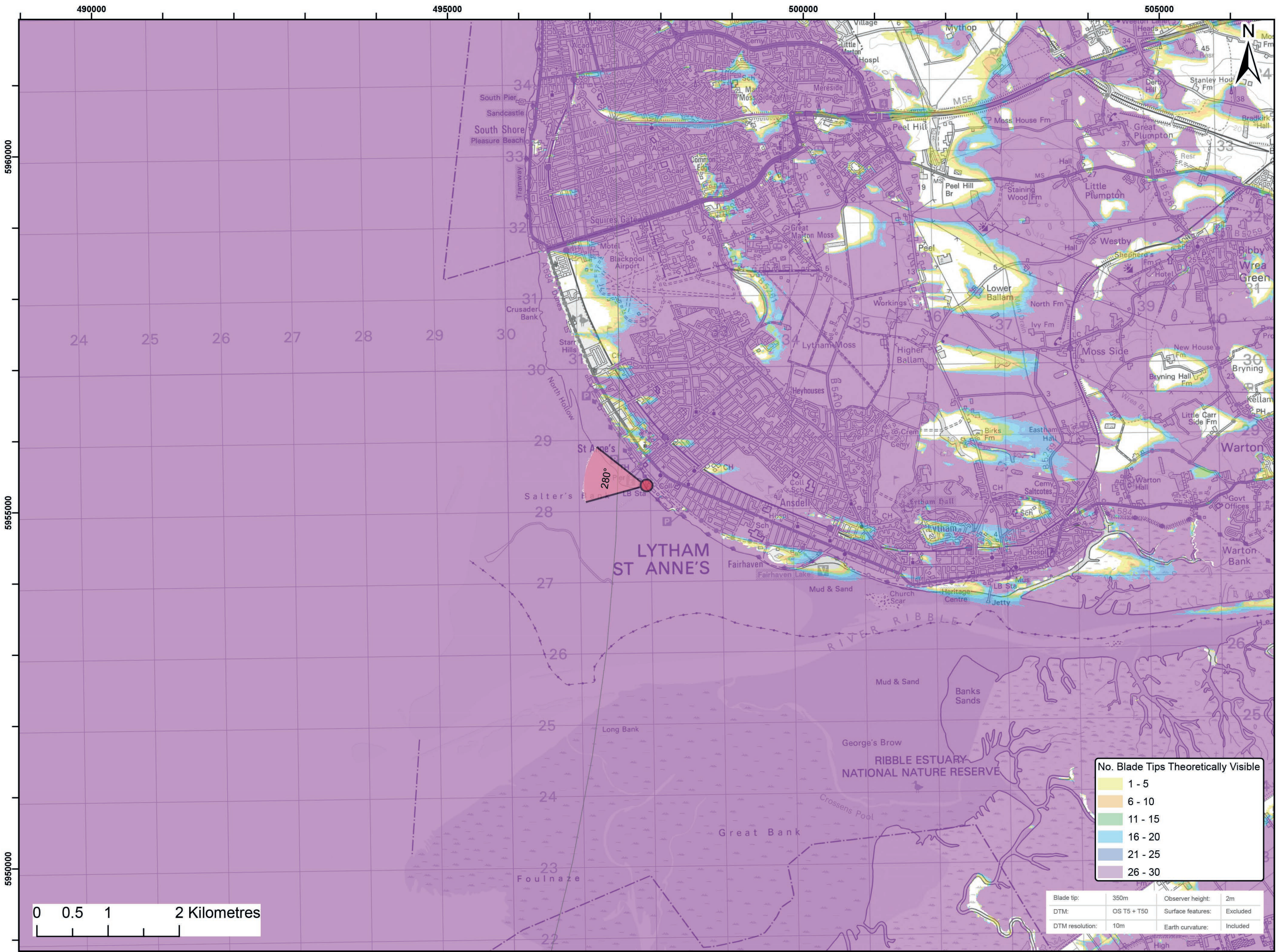
Document History

Doc No	MOR001-FLO-CON-ENV-FIG-1180	Rev	01
Alt Doc No	PC1165-RHD-ES-XX-DG-Z-0018		
Document Status	Approved for Use	Doc Date	May 2024
PINS Doc Ref	5.3.18.15	APFP Ref	5(2)(a)

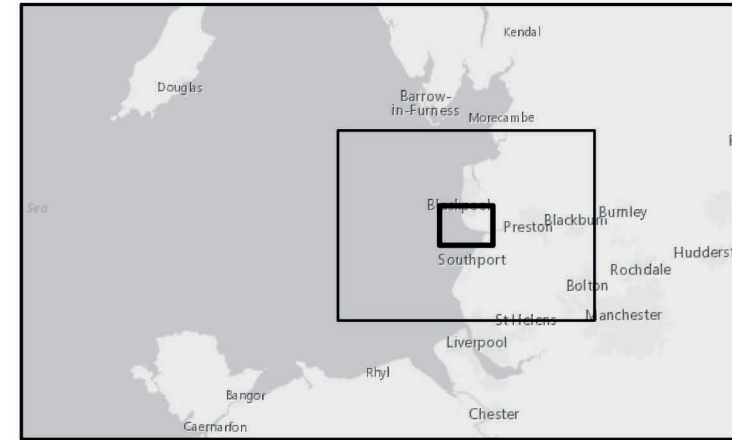
Rev	Date	Doc Status	Originator	Reviewer	Approver	Modifications
01	May 2024	Approved for Use	Royal HaskoningDHV	Morecambe Offshore Windfarm Ltd	Morecambe Offshore Windfarm Ltd	n/a



Viewpoint Location Plan Baseline Panorama (90 Degree View)
Scale: 1:200,000



Viewpoint Location Plan (53.5 Degree View)
Scale: 1:50,000



Legend:

• Morecambe Offshore Wind Farm - Assumed WTG locations (30 x BT 310m(HAT))	• Cumulative Wind Farms Status
▲ 90 Degree Field of View	• Operational
▼ 53.5 Degree Field of View	• Under Construction
 10km Radii	• Consented
 60km Study Area	• Application
 Morecambe Offshore Windfarm Site	• Scoping
	• Pre-Application

© Crown copyright and database rights (2023) Ordnance Survey 0100031673.

Report:
Morecambe Offshore Windfarm: Generation Assets Environmental Statement

Title:
Viewpoint 10: Lytham St Anne's

Figure: 18.33a Drawing No: 211609

Revision:	Date:	Drawn:	Checked:	Size:	Scale:
P02	25/09/2023	RA	SM	A3	1:50,000

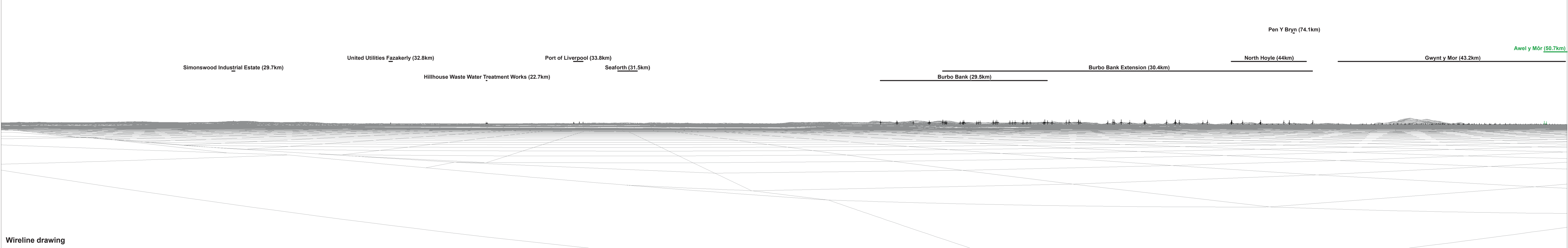
Co-ordinate system: WGS 1984 UTM Zone 30N





Baseline photograph

This image provides landscape and visual context only



Wireline drawing

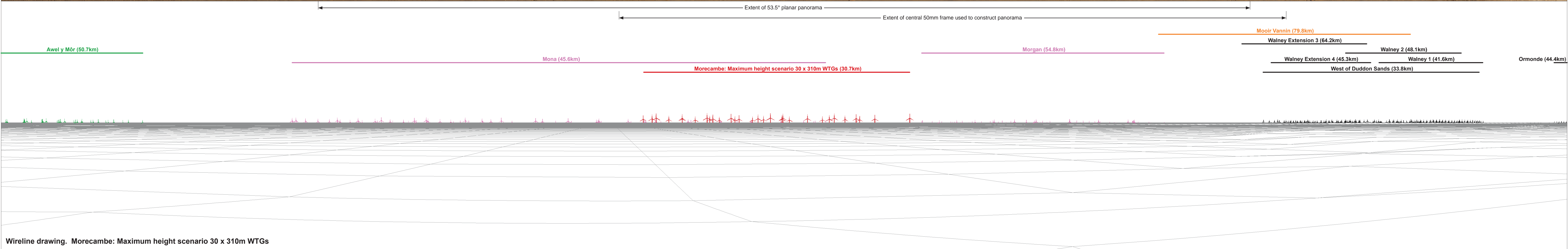
OS reference:	331948 E 428356 N	Horizontal field of view:	90° (cylindrical projection)	Camera:	Canon EOS 6D
Eye level:	7.83 m AOD	Principal distance:	522 mm	Lens:	EF50mm f/1.4 USM
Direction of view:	190°			Camera height:	1.5 m AGL
Nearest turbine:	30.673 km			Date and time:	20/04/2022, 07:53

Figure: 18:33b
Viewpoint 10: Lytham St Anne's



Baseline photograph

This image provides landscape and visual context only



Wireline drawing. Morecambe: Maximum height scenario 30 x 310m WTGs

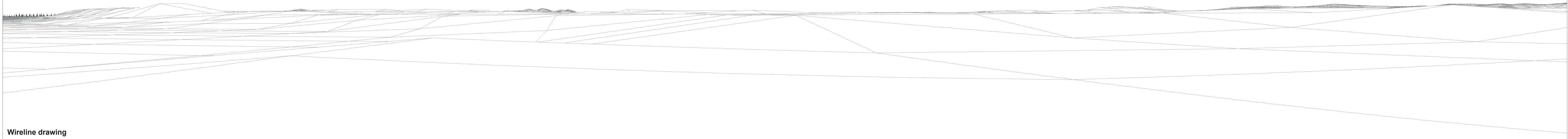
OS reference:	331948 E 428356 N	Horizontal field of view:	90° (cylindrical projection)	Camera:	Canon EOS 6D
Eye level:	7.83 m AOD	Principal distance:	522 mm	Lens:	EF50mm f/1.4 USM
Direction of view:	280°			Camera height:	1.5 m AGL
Nearest turbine:	30.673 km			Date and time:	20/04/2022, 07:53

Figure: 18:33c
Viewpoint 10: Lytham St Anne's



Ormonde (44.4km)

Barrow (30.4km)

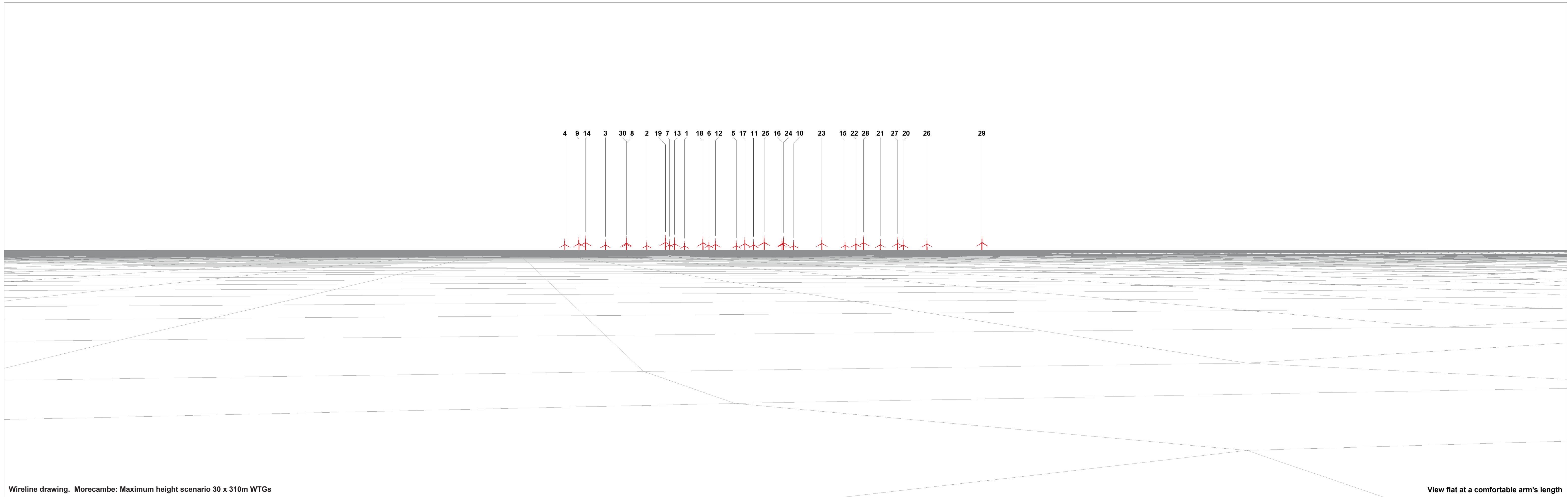


OS reference: 331948 E 428356 N
 Eye level: 7.83 m AOD
 Direction of view: 10°
 Nearest turbine: 30.673 km

Horizontal field of view: 90° (cylindrical projection)
 Principal distance: 522 mm

Camera: Canon EOS 6D
 Lens: EF50mm f/1.4 USM
 Camera height: 1.5 m AGL
 Date and time: 20/04/2022, 07:53

Figure: 18:33d
 Viewpoint 10: Lytham St Anne's



Wireline drawing. Morecambe: Maximum height scenario 30 x 310m WTGs

View flat at a comfortable arm's length

OS reference:	331948 E 428356 N	Horizontal field of view:	53.5° (planar projection)	Camera:	Canon EOS 6D
Eye level:	7.83 m AOD	Principal distance	812.5 mm	Lens:	EF50mm f/1.4 USM
Direction of view:	280°	Paper size:	841 x 297 mm (half A1)	Camera height:	1.5 m AGL
Nearest turbine:	30.673 km	Correct printed image size:	820 x 260 mm	Date and time:	20/04/2022, 07:53

Figure: 18:33e
Viewpoint 10: Lytham St Anne's



Baseline Photograph

View flat at a comfortable arm's length

OS reference: 331948 E 428356 N	Horizontal field of view: 53.5° (planar projection)	Camera: Canon EOS 6D	
Eye level: 7.83 m AOD	Principal distance: 812.5 mm	Lens: EF50mm f/1.4 USM	
Direction of view: 280°	Paper size: 841 x 297 mm (half A1)	Camera height: 1.5 m AGL	
Nearest turbine: 30.673 km	Correct printed image size: 820 x 260 mm	Date and time: 20/04/2022, 07:53	Figure: 18:33f Viewpoint 10: Lytham St Anne's



Photomontage

View flat at a comfortable arm's length

OS reference:	331948 E 428356 N	Horizontal field of view:	53.5° (planar projection)	Camera:	Canon EOS 6D
Eye level:	7.83 m AOD	Principal distance:	812.5 mm	Lens:	EF50mm f/1.4 USM
Direction of view:	280°	Paper size:	841 x 297 mm (half A1)	Camera height:	1.5 m AGL
Nearest turbine:	30.673 km	Correct printed image size:	820 x 260 mm	Date and time:	20/04/2022, 07:53

Figure: 18:33g
Viewpoint 10: Lytham St Anne's